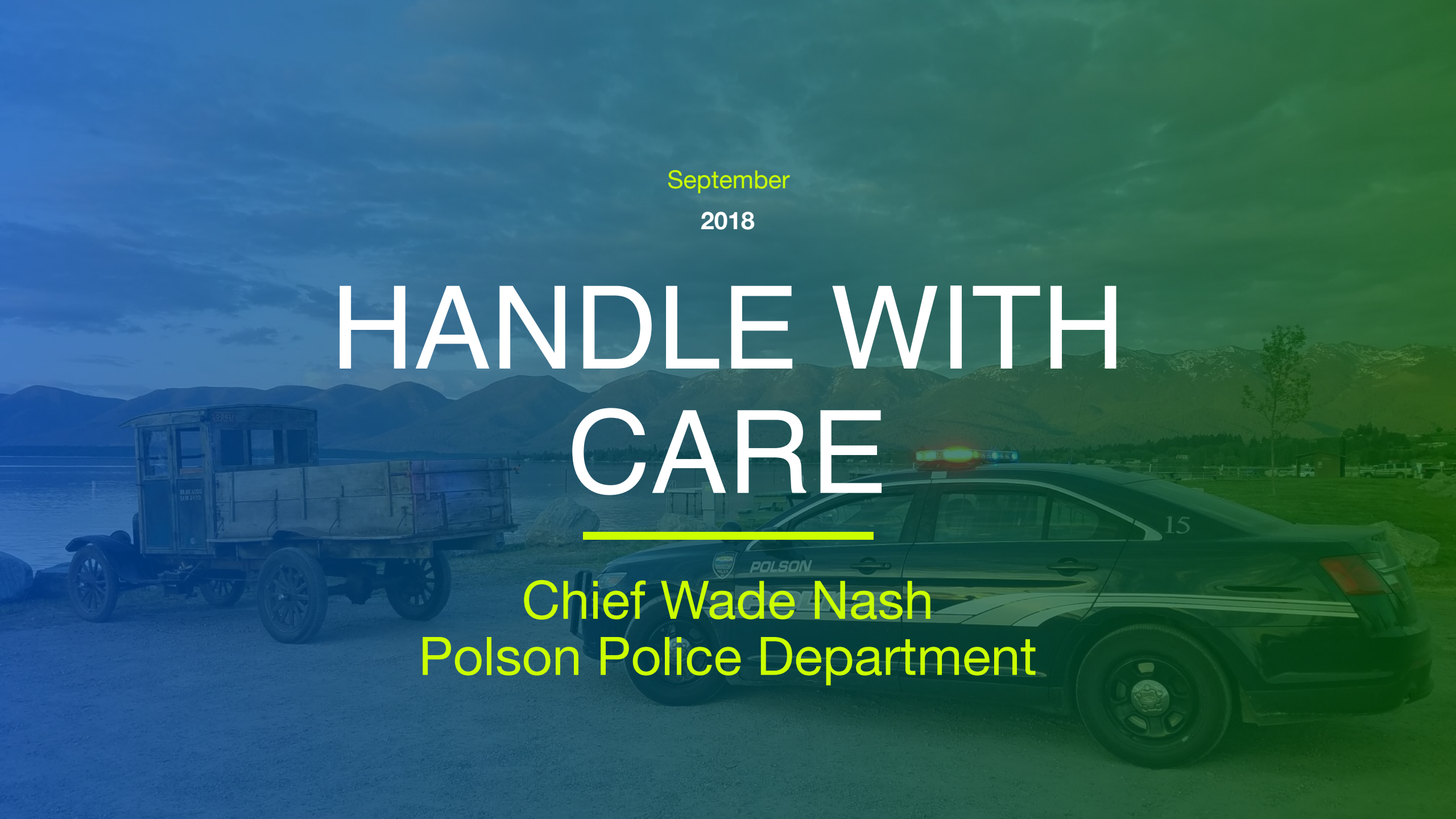


September
2018

HANDLE WITH CARE

Chief Wade Nash
Polson Police Department





WHY WE
CARE?





OBJECTIVES

- Identifying trauma induced mental health concerns
- Handle with Care Program
- Local legal concerns

TRAUMATIC EVENTS

When stress is extreme it can have profoundly negative consequences

- Biological Concerns:
 - Variety of physical illnesses & diseases
- Psychologic concerns:
 - Post-Traumatic Stress Disorder (PTSD)
 - Anxiety Disorder
 - Depressive Disorders
 - Bullying



CONCERN

Children are more likely to develop a disorder when faced w/adverse environmental or psychological events, such as childhood maltreatment, neg. life event, trauma, & so on.



TRAUMATIC EVENTS

Stressors & Life Changes

- Can be actual or threatened harm or serious injury related events for ex: physical assault, sexual assault, child abuse, domestic violence, crash, natural disaster, robbery, burglary.
- Less intense ex: death of family member, custody battle, arrest of a family member, traffic stop, residential warrant service.



A smiling police officer in a Polson, MT uniform stands next to a police car. The officer is wearing a blue uniform with a patch that says "POLSON POLICE MT" and a name tag that says "H. RAFIU". He is pointing towards the camera. The background shows a brick wall and a window with blue shutters. The image is overlaid with a green gradient.

TRAUMATIC EVENTS

Stress Reactions

Experiences and behaviors may include intrusive & painful memories of the stressor event, jumpiness, persistent negative emotional states, detachment from others, angry outbursts, & avoidance.



TRAUMATIC EVENTS

Fear & Anxiety

Fear involves an instances reaction to an imminent threat, whereas anxiety involves apprehension, avoidance, & cautiousness regarding potential threat, danger or another negative event.

Healthy natural reactions until it becomes hypervigilant.

TRAUMATIC EVENTS

Bullying Correlation

Anxiety and stress can cause a child to behave awkward and these actions may draw criticism from others causing the problem to exacerbate.

Ex: A child is subjected to a late night unpleasant social experience causing her to develop a neg. social image of herself. Due to the event she is sleep deprived. Now she is not acting like her usual self. The opportunity for bullying or being bullied is greatly increased.

BULLYING PARADIGM

Imbalance of power – physically, emotionally, & socially over the victim.

- This is a pos. experience for the bully as it boost their self-esteem.
- Increases bully victim's anxiety and depression
- Children who are emotionally reactive are at a greater risk for being bullied.
- Trauma effected children may become the bully as easily as they may become bullied – coping mechanism.



SOCIAL SUPPORT

Can take many forms, including advice, guidance, encouragement, acceptance, emotional comfort, & tangible assistance.



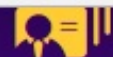
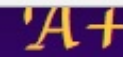
SOCIAL SUPPORT

Without it youth are at an increased risk for substance abuse and major depressive disorder which has been shown as being linked to suicide.



Handle With Care How Does It Work?





Quick Links

- [Polson Summer Food Program](#)
- [2018-19 School Calendar](#)
- [Dr. Barron Presentation](#)
- [Files and Documents](#)
- [Food Services / Menus](#)
- [Handle with Care](#)
- [Health Services](#)

Superintendent's Memo to the Community

Superintendent Weltz has issued a memo for the community. [Click here to view the memo in PDF format.](#)

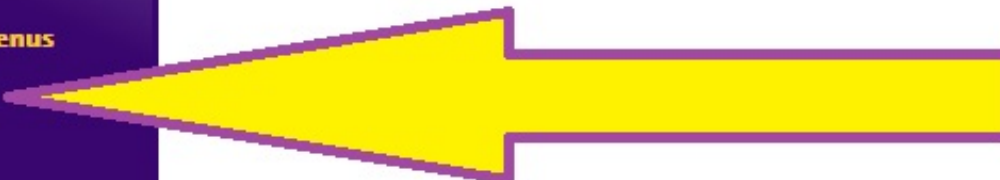
Superintendent's School Safety Message

Superintendent Weltz has issued a statement about school safety. [Click here to view the message in PDF format.](#)

Upcoming Events

There are no upcoming events to display.

[View Calendar](#)



That is all the info they require, but they may
contact
The officer for more vague info regarding child
needs

Handle With Care - Polson, Montana

This form is for reporting officials ONLY.

Please fill out this form to help Polson School District better serve our students by letting us know when a student has been involved in a traumatic event or accident. We will use this information to support this student and ensure his or her needs are met at school.

Fill out one form per student. This information will be sent to the school counselor and principal and kept confidential.

Thank you.

Student Name – Age – Incident Date
Reporting Agency – Contact Info of Person Making Rpt



DON'T PANIC IT'S LEGAL

At least we at Polson PD believe it is.

**MCA 2017 / Title 44 / Chapter 5 Criminal Justice
Information**

MCA 2017 / Title 41 / Chapter 7 MT Family Policy Act

CRIMINAL JUSTICE INFORMATION

Not really, but sorta

Officers let's school know after they have responded to a traumatic event w/a child present, **no specific details are provided about the incident, other than the child's name & DOB.**

The traumatic event does not necessarily mean a crime, it could be a traffic crash, could be a civil dispute, could be a death notification, or a hundred other scenarios. The school will never know because **no specific details are provided about the incident, other than the child's identity.**

MONTANA FAMILY POLICY ACT

Has you covered

Policy of the state to support & preserve the family as the single most powerful influence for ensuring the healthy social development & mental & physical well-being of MT's children.

Identifies the guiding principles of actions that serve children and families.

More info at MCA 41-7-102

HANDLE WITH CARE

Notification system is the best & most efficient way. It met our needs in Polson.

In Bozeman the SRO is notified and all the information is channeled through the SRO who is then expected to “keep watch” on the child.

Smaller cities have smaller resources.

The Polson School District has one SRO that covers six schools. That SRO works for the LCSO and is not available to us every time we need him. We currently send him an email and FYI him on the reports we think he should be aware of, however that is very unreliable because he doesn't check his correspondence regularly and cannot sit in one school all the time.



THANK YOU!

Wade Nash

Phone

406-883-8211

Email

chief@cityofpolson.com