

POWER OF PARTNERSHIP S

DISTRICTS AND LAW
ENFORCEMENT WORKING
TOGETHER FOR SAFER
SCHOOLS





School Resource Officer TIM DOLL & Targhee

**Billings Police Department
MTASRO President
NASRO Region 10 Director**



WHY COLLABORATION MATTERS

Protection of our Students, Staff, Visitors, and Property

Prevention of Violence, Bullying, and Substance Abuse

Ensure the Rapid Response to Emergencies by all parties

Foster ***TRUST*** within the School Community

Build ***POSITIVE*** Relationships with Students and Law Enforcement

WHO ARE OUR PARTNERS IN EDUCATIONAL SAFETY

SCHOOL
ADMINISTRATO
RS

SCHOOL
RESOURCE
OFFICERS

TEACHERS AND
STAFF

LOCAL LAW
ENFORCEMENT
OFFICERS

STUDENTS AND
PARENTS

MENTAL
HEALTH
PROVIDERS

LAW ENFORCEMENT TEAM MEMBERS

SAFETY TEAM
MEMBERS

SCHOOL
RESOURCE
OFFICERS

EMERGENCY
RESPONSE
PLANNING

SAFETY AND
DRILL ADVISORS

CRIMINAL
INVESTIGATORS

BEHAVIORAL
THREAT
ASSESSMENT
AND
MANAGEMENT
(BTAM)

LAW ENFORCEMENT MISUNDERSTANDIN

Internal Distress

- Depression, Mental Illness, Suicidal/Homicidal Issues
 - We handle the issue and move on
 - Not trained to deal with most youth issues

External disagreements or fights

- Bar fights –one and done
- Student issues- everyday 24/7
 - Bullying
 - Harassment



MINDSET OF PATROL vs SRO

ASK-TELL-MAKE

- We give orders or directions
- We expect cooperation
- MENTOR/EDUCATE/LE

Understanding the Child

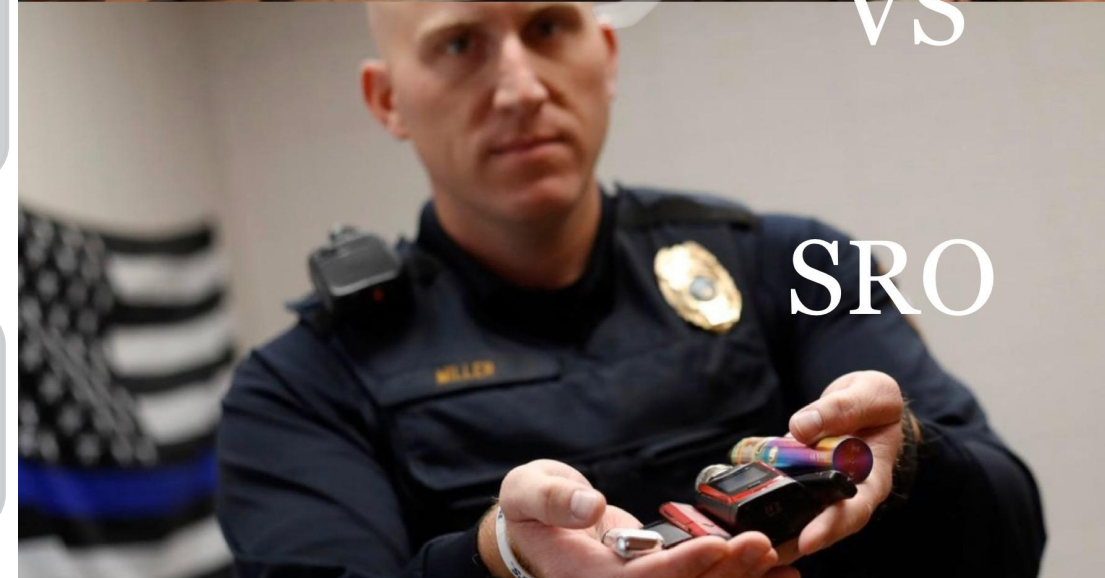
- Patrol only see criminal activity no brain development
- Feeling Brain vs Thinking Brain

Reactive vs Proactive policing

- Respond to calls
- Education
- Positive Relationships



VS



SRO INVOLVEMENT

MERT (Medical Emergency Response Team)

Safety Teams

Positive Behavior Intervention Support

Student Assistance Programs

Multi Tiers Systems of Support



OUTSIDE LAW ENFORCEMENT NEEDS



Exterior Door
Access (Knox Box,
Keys, Codes)



Interior Door Access



Wayfinding (School
Maps)



Cameras



Equipment (Medical,
Fire)



Contact information

**BEFORE THE
INCIDENTS
OCCUR, WE
CAN....**

Policy	Develop and Enforce Safety Policies
Promote	Promote Positive School Climate
Provide	Provide Mental Health and Counseling Services
Partner	Partner in Training and Prevention Programs
Communicate	Communicate Transparency with Parents and the Community

Culture and Climate

Positive
Childhood
Experiences PCE
vs ACES

Community
Involvement and
traditions

Belonging to the
school

Power of 1

Safety and
Protection in the
school setting

Trusted adult to
speak with



LAW ENFORCEMENT : POSITIVE RELATIONSHIP S

- SRO TRIAD
- Check in/Check Out
- Members or Leaders of School Clubs
- Coaches
- Law Enforcement National Night Out Program
- Camps





PROGRAMS THAT WORK

- NASRO "GOLD STANDARD"
- DARE/GREAT
- ALIVE AT 25
- NETSMARTZ
- FATAL VISION (Impairment Goggles)
- Anonymous Tip Lines/Apps
- Restorative Justice Programs
- School Safety Assessments and Audits

BEST PRACTICES FOR COLLABORATION

Memorandum of Understanding (MOUs)

Joint Training Activities/Tabletop Exercises

Behavioral Threat Assessment Teams

Information Sharing Protocols

Regular Safety Meeting at the District and School Levels

BENEFITS OF COLLABORATION

Enhanced
Emergency
Preparedness

Clear
Communication
Channels

Early Intervention
and Prevention
(BTAM)

Reduced
School-Based
Crime

Stronger
School-Community
Relationships

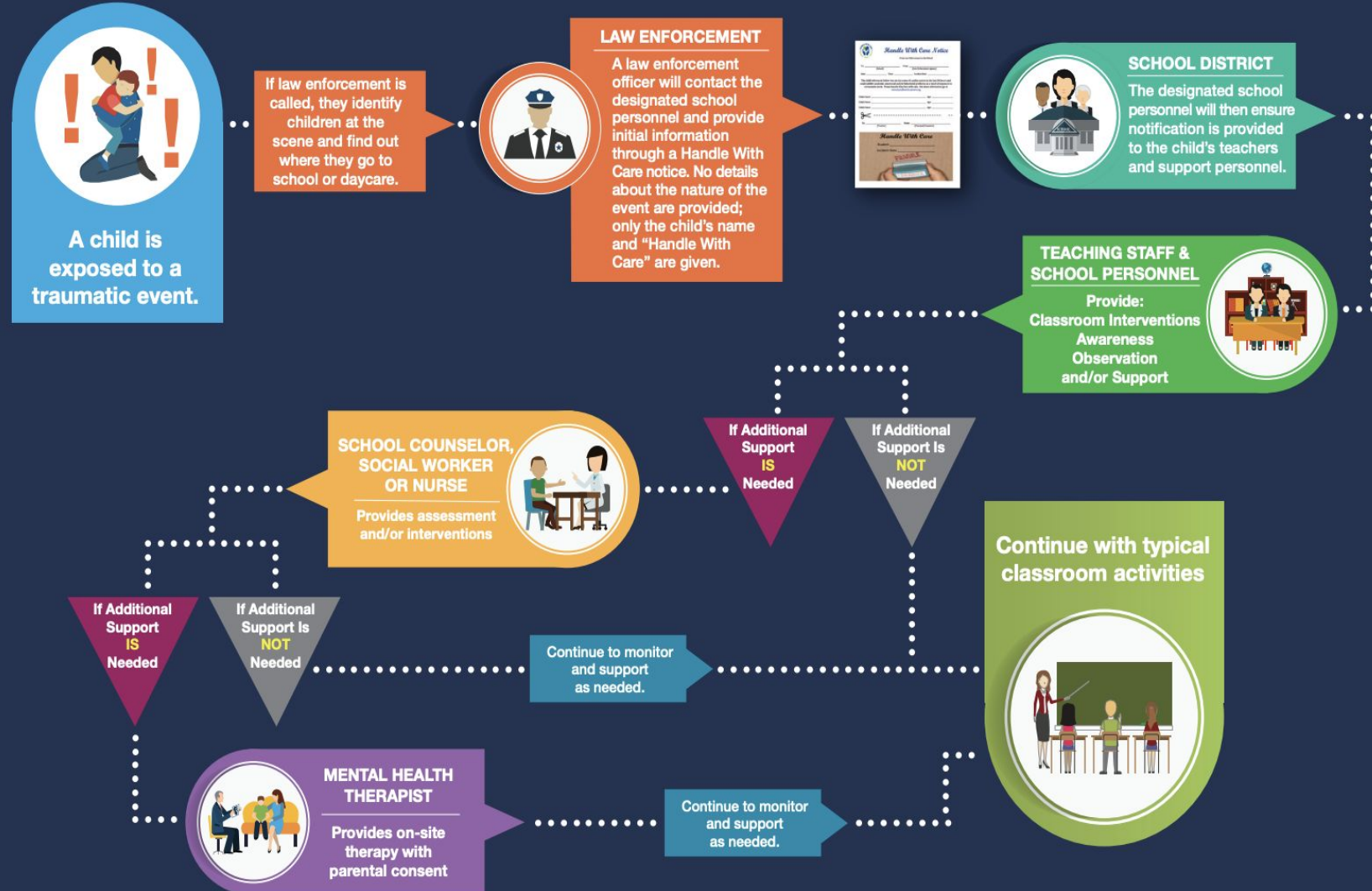


HANDLE WITH CARE PROGRAMS



HANDLE WITH CARE

Process Flow Chart

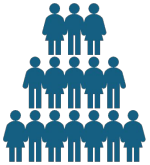


EMERGENCY PLANNING AND DRILLS



- CRAWL----WALK----RUN
- Everyone on the same page (ALICE, ALERRT, SAFARILAND)
- Trauma focused training for staff and students
- All roles understood for everyone in training and life
- Tabletop Exercises
- Briefings and Debriefings

BEHAVIOR THREAT ASSESSMENT AND MANAGEMENT TEAMS



Multi-Disciplinary
team present for
each BTAM



Updated Training for
all members annually



Joint decision
making



Management of
current and past
BTAM



Documentation,
Documentation,
Documentation

PREVENTION AND EARLY INTERVENTION

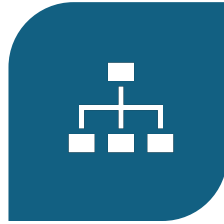
- Anonymous Reporting
 - SaferMT
 - Safe2Tell
 - Sandy Hook Promise
- Behavioral Interventions
- Restorative Justice/Practices
- Counseling
- Family Outreach programs/assistance
- Student Activities



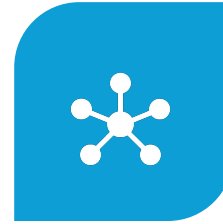
CPTED and Physical Structure Strengthening



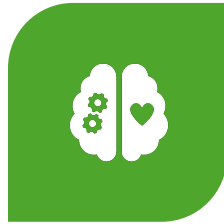
NATURAL
SURVEILLANCE



ACCESS
CONTROL/MANAGEMENT



TERRITORIALITY



OTHER FACTORS

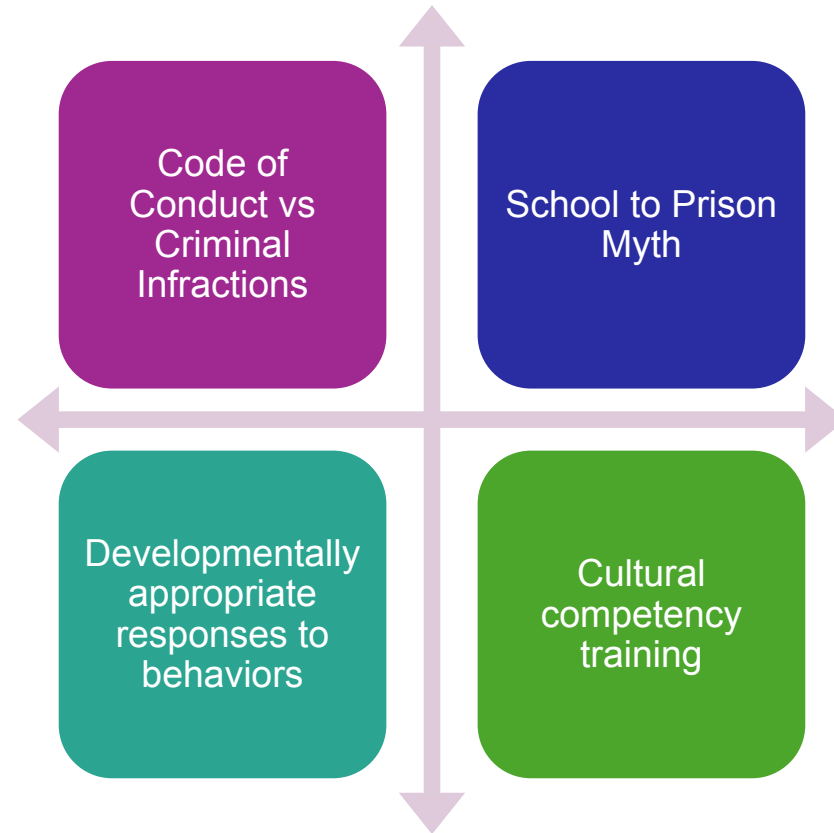


PHYSICAL
MAINTENANCE



ORDER MAINTENANCE

Equity and Rights



EMERGENCY OPERATIONS PLANS



Prevention/Mitigation



Preparedness



Response



Recovery

WHAT HAS YOUR SCHOOL PLANNED FOR

- FIRES
- EVACUATIONS
- WEATHER EVENTS
- INDUSTRIAL ISSUES
- BOMB THREATS
- ARMED INTRUDERS
- MEDICAL/DEATH EVENTS
- EXTRACURRICULAR ACTIVITIES
- REUNIFICATION TO/FROM YOUR SCHOOL
- POLICE EVENTS IN THE AREA
- TRANSPORTATION
- UPSET PARENT
- 1st AMENDMENT
- AUDITORS

Emergency Reunification

- Do you have an ACTUAL plan in place?
- Does you LE know what the plan is?
- Will your reunification site work for you?
- **SCHOOL DISTRICT WILL REUNIFY**, LE will be there for support and security!!!!

THE STANDARD REUNIFICATION METHOD SRM V3



REUNIFY

A Practical Method to Unite Students with Parents After an Evacuation or Crisis.
The "I Love U Guys" Foundation



SRM Version 3.0

Overall Goals with LE

- Team Based Safety Benefits
- MOUs
- Continuous Safety Team Planning and Updating
- Emergency Operations Plans
- BUT MOST IMPORTANT IS:
RELATIONSHIPS



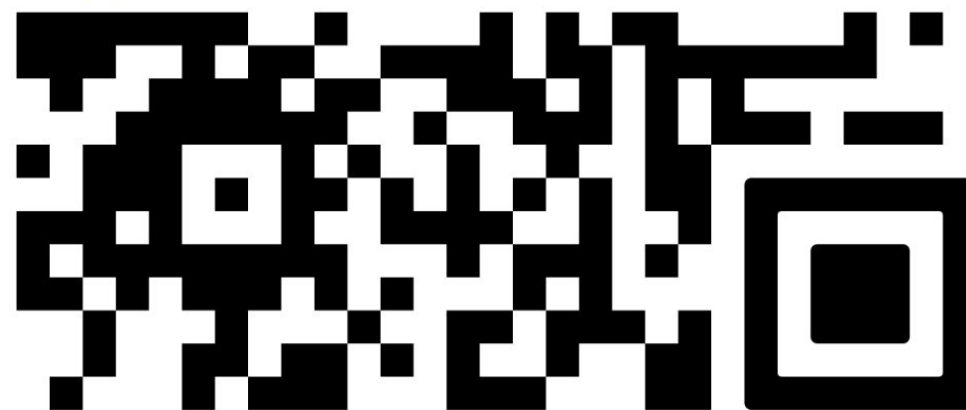


QUESTIONS,
COMMENTS
, CONCERNS



Jeremy Bullock

SAFE SCHOOLS SUMMIT





School Resource Officer TIM DOLL & Targhee

**Billings Police Department
MTASRO State President
NASRO Region 10 Director**

