



Tammy Tolleson Knee
Montana Safe Schools Center



It became painfully clear:
there is a significant
communication barrier
between students, staff,
parents, and first
responders when it
comes to emergency
operations.



IN AN EMERGENCY TAKE ACTION



HOLD! In your room or area. Clear the halls.

STUDENTS

Clear the hallways and remain in room or area until the "All Clear" is announced
Do business as usual

ADULTS

Close and lock door
Account for students and adults
Do business as usual



SECURE! Get inside. Lock outside doors.

STUDENTS

Return to inside of building
Do business as usual

ADULTS

Bring everyone indoors
Lock outside doors
Increase situational awareness
Account for students and adults
Do business as usual



LOCKDOWN! Locks, lights, out of sight.

STUDENTS

Move away from sight
Maintain silence
Do not open the door

ADULTS

Recover students from hallway if possible
Lock the classroom door
Turn out the lights
Move away from sight
Maintain silence
Do not open the door
Prepare to evade or defend



EVACUATE! (A location may be specified)

STUDENTS

Leave stuff behind if required to
If possible, bring your phone
Follow instructions

ADULTS

Lead students to Evacuation location
Account for students and adults
Notify if missing, extra or injured students or adults



SHELTER! Hazard and safety strategy.

STUDENTS

Use appropriate safety strategy for the hazard

Hazard

Tornado
Hazmat
Earthquake
Tsunami

Safety Strategy

Evacuate to shelter area
Seal the room
Drop, cover and hold
Get to high ground

ADULTS

Lead safety strategy
Account for students and adults
Notify if missing, extra or injured students or adults

© Copyright 2009-2020, All Rights Reserved. The "I Love U Guys" Foundation, Conifer, CO. The Standard Response Protocol and Logo are Trademarks of The "I Love U Guys" Foundation and may be registered in certain jurisdictions. This material may be duplicated for distribution per "SRP Terms of Use". SRP TxSSC 2021 Poster_EN | V 4.0 | Revised: 07/14/2020 | <http://iloveuguy.org>



SHARED LEXICON

Of School Safety



PEACE.

It does not mean to be in a place where there is no noise, trouble, or hard work.

It means to be in the midst of those things and still be calm in your heart.

SRP-2023

Standard Response Protocol



HOLD



SECURE



LOCKDOWN



EVACUATE



SHELTER

HOLD!

In your classroom



PUBLIC ADDRESS

Action and Directive is Repeated



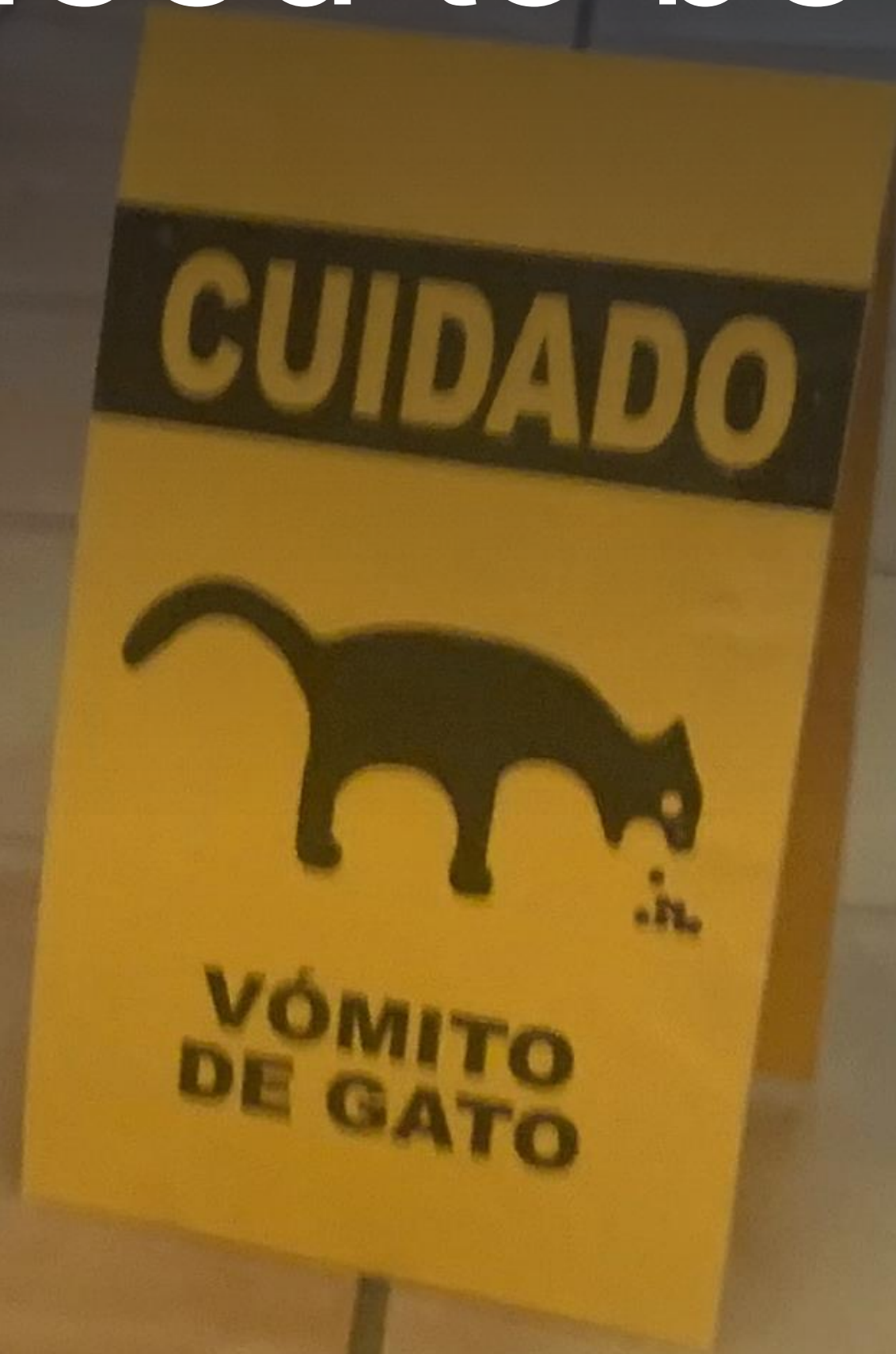
WHY?

The halls need to be kept clear.



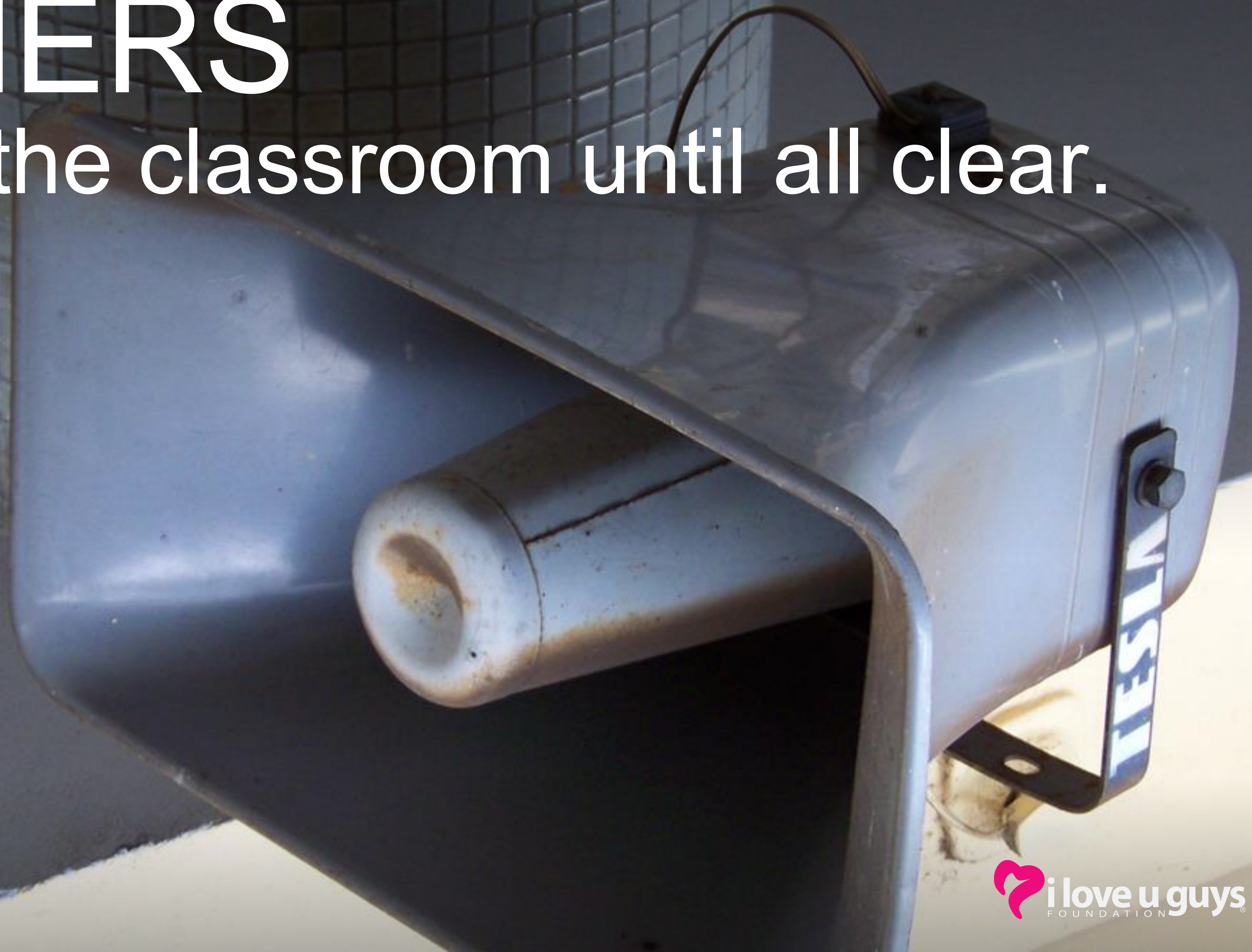
WHY?

The halls need to be kept clear.



TEACHERS

Remain in the classroom until all clear.



TEACHERS

Close and lock the classroom door.



TEACHERS

Take attendance and note the time



TEACHERS

Business as usual.



STUDENTS

Remain in the classroom until all clear.



DISCUSSION:

What about class changes?



What if a class is outside?

DISCUSSION:

Is this a Lockdown?



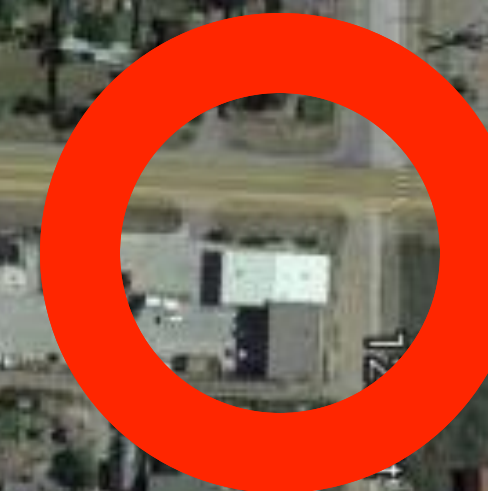
SECURE

Get Inside. Lock Outside Doors



WHY SECURE?

Something dangerous near the school



DANGEROUS

Animal on the playground



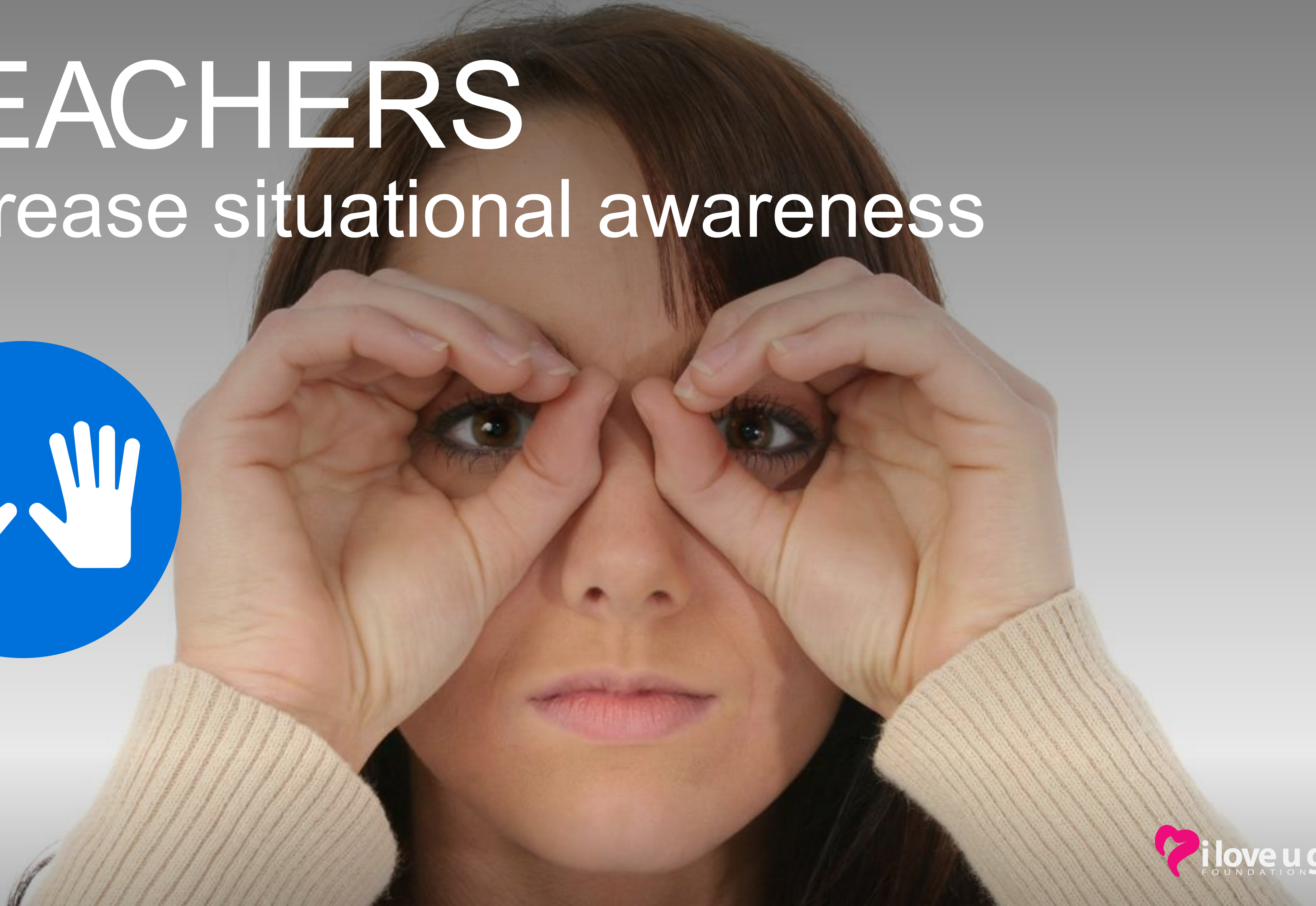
TEACHERS

- Bring everyone inside
- Lock outside doors



TEACHERS

Increase situational awareness



TEACHERS

- Take attendance and note the time
- Business as usual



STUDENTS

- Get in the building then no one in or out
- Business as usual



DISCUSSION:

What about class changes?
Can we leave the school?



Environment Dictates Tactics

LOCKDOWN

Locks, Lights, Out of Sight!



WHY?

Something dangerous inside the building



WHEN?

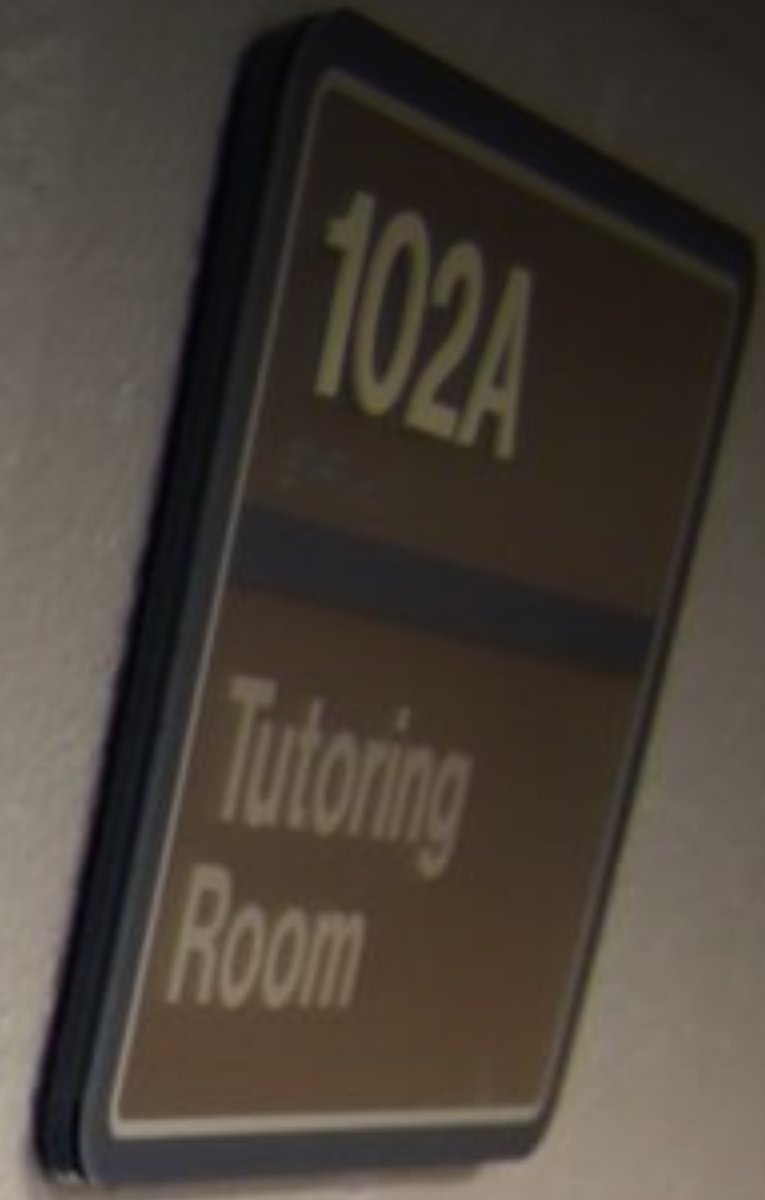
Dangerous person in the building
Report of a weapon



TEACHERS



- Recover students from hallway (if possible)
- Lock classroom door
- Turn out lights
- Move away from sight



TEACHERS

Maintain silence

Take attendance and note time

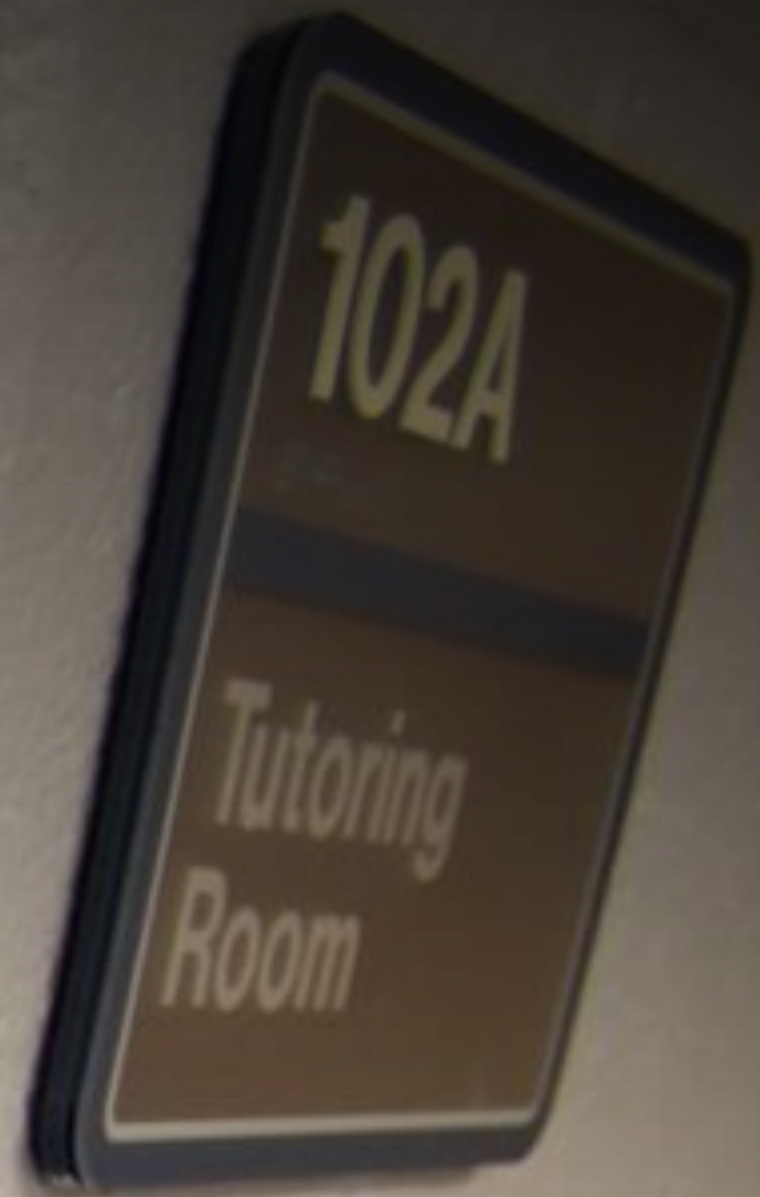
Prepare to evade or defend



STUDENTS



- Move away from sight
- Maintain silence
- Do not open the door



EXTERIOR SHADES

Leave alone



DISCUSSION:

- Difference between secure and lockdown?
- What if fire alarm sounds?



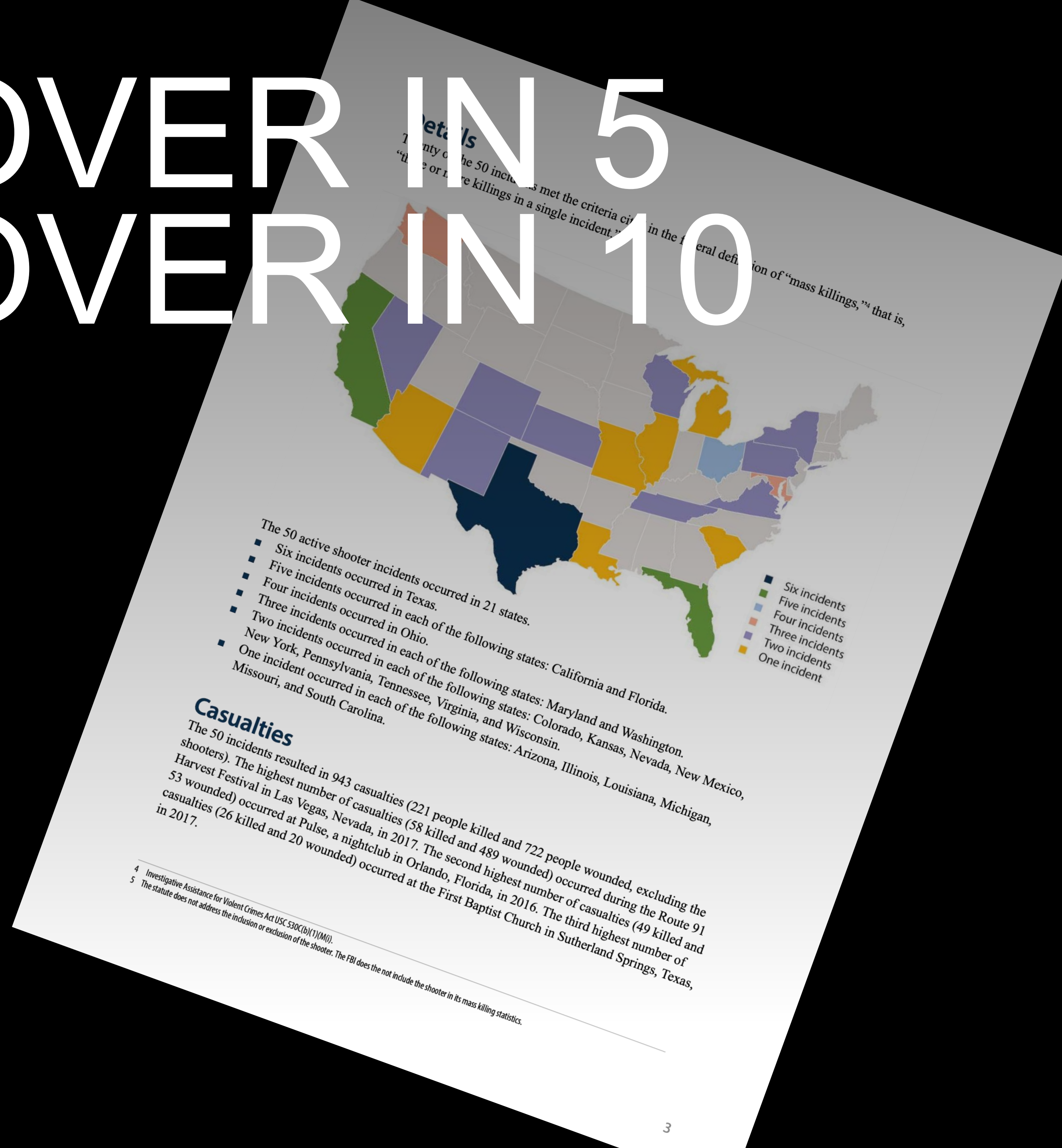
DISCUSSION:

What if you're outside?



TIME BARRIER

70% OVER IN 5 90% OVER IN 10



THE POWER OF A LOCKED DOOR

EVACUATE

To a location

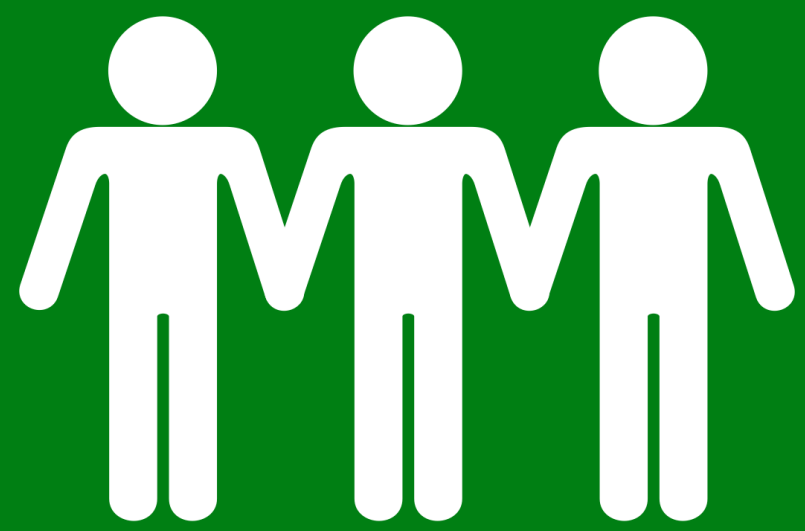


TEACHERS



- Lead students to evacuation location
- Account for students and staff (notify if someone is missing)

STUDENTS



- Leave your stuff behind
- Listen for instructions

SHELTER

For Hazard using Safety Strategy



HAZARD?

A danger or risk.



STRATEGY

The action or plan to remain safe.



EARTHQUAKE

Drop cover and hold



HAZMAT

Seal vents and doors



ZOMBIE ATTACK

Get a kit, make a plan, be prepared.



TEACHERS

Lead safety strategy

If possible, take attendance
notify of missing



STUDENTS

Always listen for instructions



AN IMPLICIT PART OF SRP IS THAT
AUTHORITIES AND TEACHERS TELL
STUDENTS WHAT IS GOING ON

SHARED WITH Staff



SHARED WITH Students



SHARED WITH Parents





SHARED WITH First Responders

PREPARATION IS KEY



Recovery starts before the
crisis begins.

ONLINE

<https://iloveguys.org>



QUESTIONS, COMMENTS, HEARTBURN?

Contact Info:

Tammy Tolleson Knee

tamara.tollesonknee@mso.umt.edu

406.243.4974

MontanaSafeSchools.org