

---

# Reimagining School Safety in Practice

**Jeremy Bullock Safe Schools Summit – August 7, 2024**

**Lauren Trout and Krystal Wu**



# Welcome!

Please raise your hand if your role is...

- School and District administrators
- Law enforcement & youth court services
- Student-support personnel (counselors, psychologists, nurses)
- Teachers/other school-based staff
- Youth
- Other?

Then, turn and talk to someone near you about who you are, where you're from, and what brings you here.





---

## Together, We Will...

- Consider safety through a reimagined paradigm that centers connection and belonging.
- Explore bridging the gap between traditional and reimagined safety paradigms.
- Learn from your peers through reflection and conversation.





---

# Shifting Paradigms



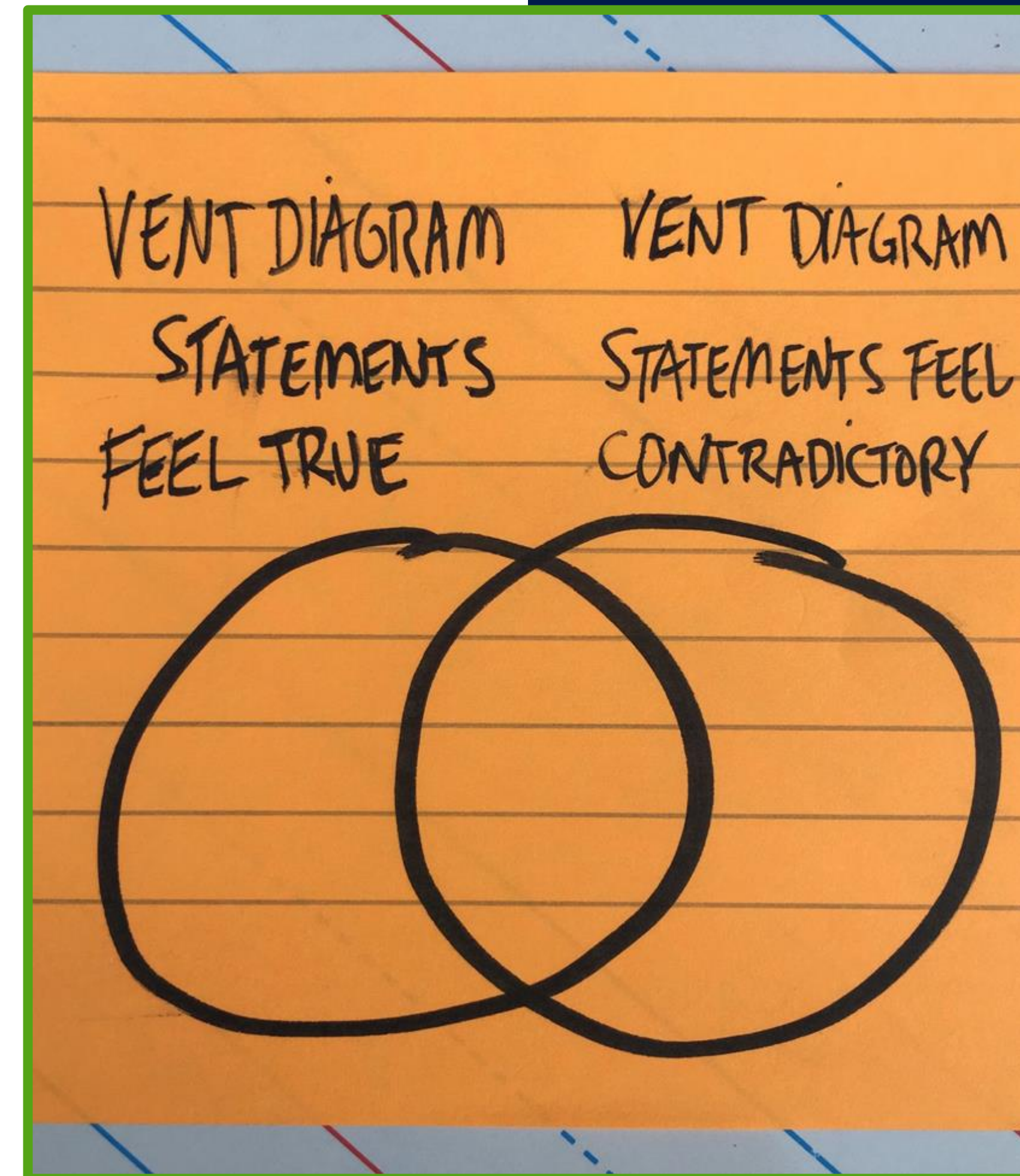
**“Safety is not the absence of threat; it is the presence of connection.”**

– Stephen Porges

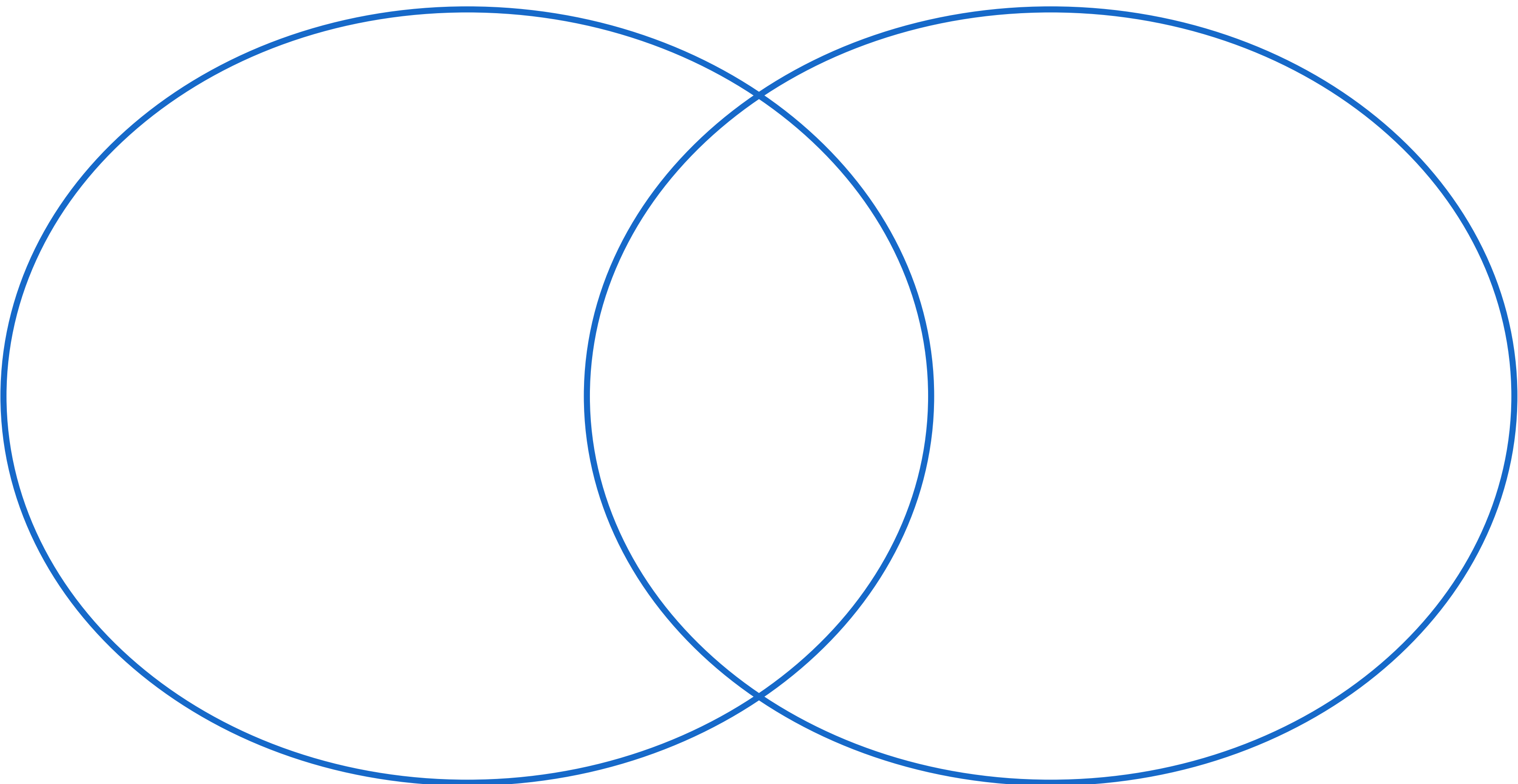
*What do you think, feel, and wonder when you read this quote?*

# Vent Diagrams

- › The brainchild of two New York artists, a “vent diagram” is a diagram of the overlap of two true statements that might appear contradictory.
- › Vent diagrams help us explore complexity by moving beyond binary thinking.



**We must act now  
to keep schools safe.**



**We need to play the long  
game to keep schools safe.**

---

## Traditional Safety

The absence of harm and violence.

## Reimagined Safety

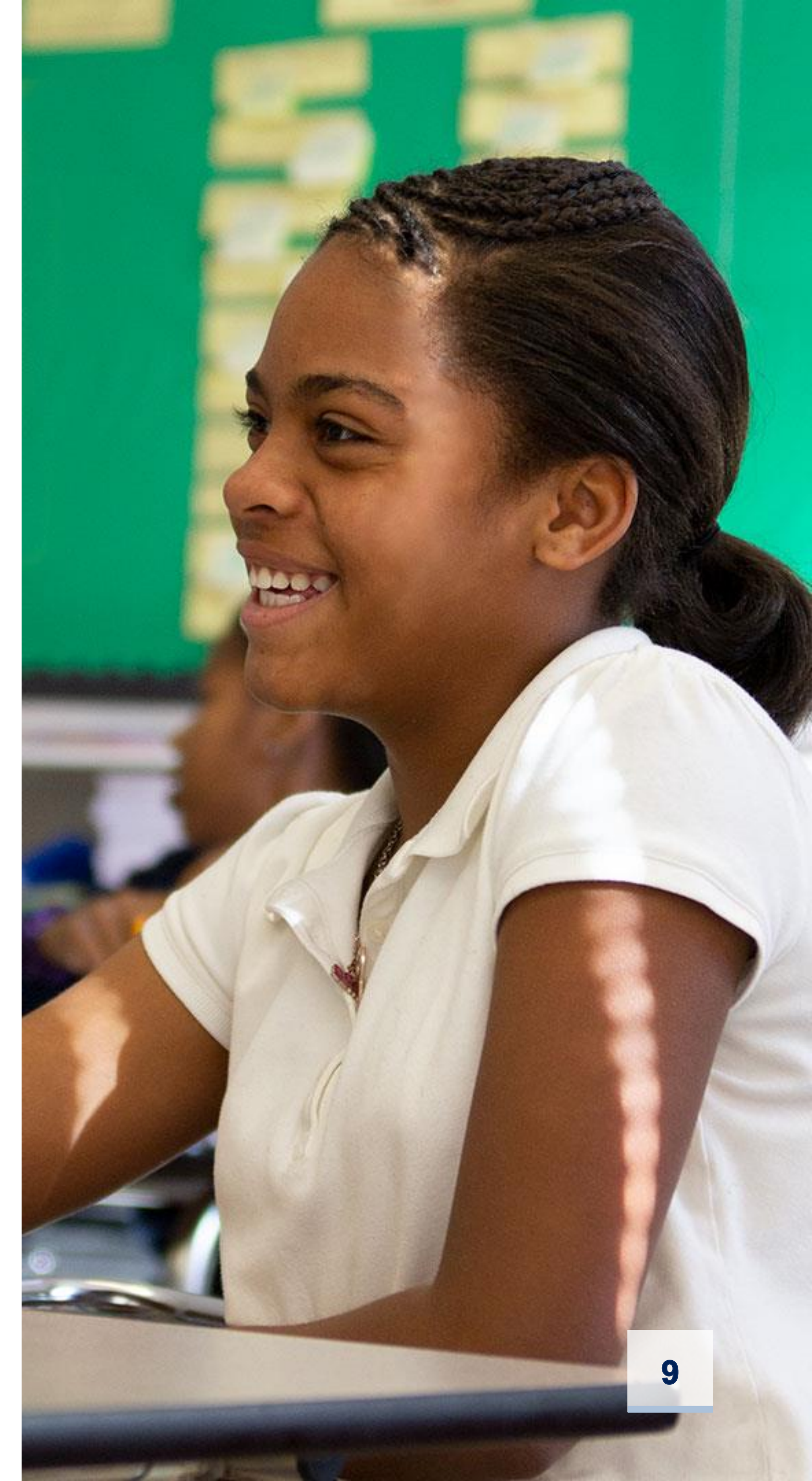
The creation of systems and cultures of belonging and care.



---

## Pair-Share

- What images/snapshots did you capture on the page?
- What do you notice about what you drew?
- What do you observe about how you felt as you drew?





---

## Traditional Safety

The absence of harm and violence.

## Reimagined Safety

The creation of systems and cultures of belonging and care.

*What images/words/feelings did you associate with each paradigm?*



---

## Traditional Safety

The absence of harm and violence.

## Reimagined Safety

The creation of systems and cultures of belonging and care.

*What questions are arising?*

*What tensions are you holding?*

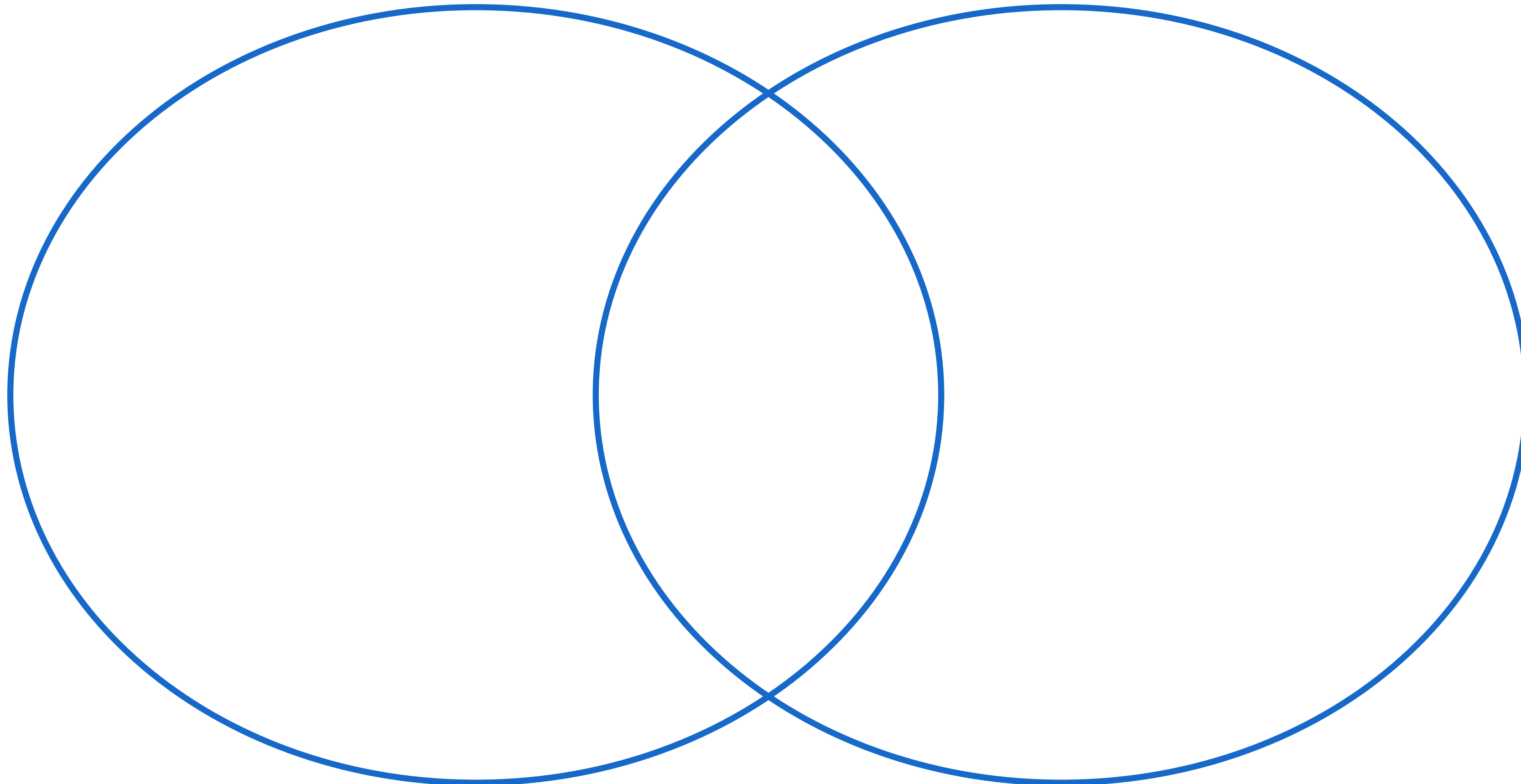


---

# Moving Towards a Reimagined Paradigm



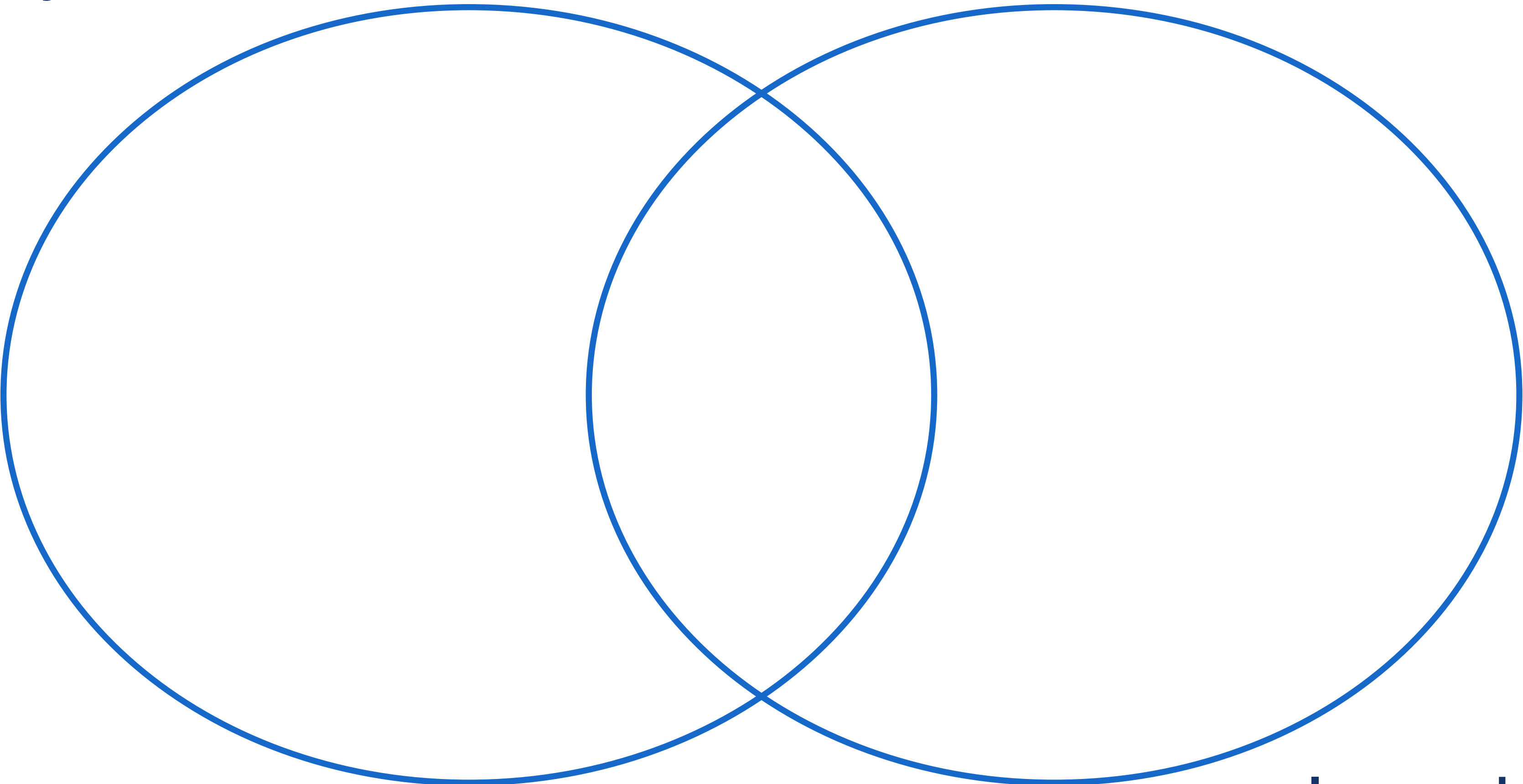
**Achieving a reimagined  
safety paradigm may not be  
possible in our lifetimes.**



**Operating from a traditional safety  
paradigm causes harm now.**



**It's impossible for me to  
reimagine safety because...**



**In my sphere of influence, I  
can reimagine safety by...**



**It's impossible for me to  
reimagine safety because...**

**Instructions:**

- Complete the sentences on either side of the Vent Diagram. Write as many versions as you can that are authentic to your experience.
- Select your favorite pair.

**In my sphere of influence, I  
can reimagine safety by...**



---

## Pause & Reflect

- Take a minute to review your Vent Diagram(s). What do you notice? What emotions do you feel? What sensations do you experience in your body?



---

## Share Out

- What Vent Diagram(s) did you end up creating?
- What do you notice about your colleague's responses?
- What now?
- What's next?





---

# Closing





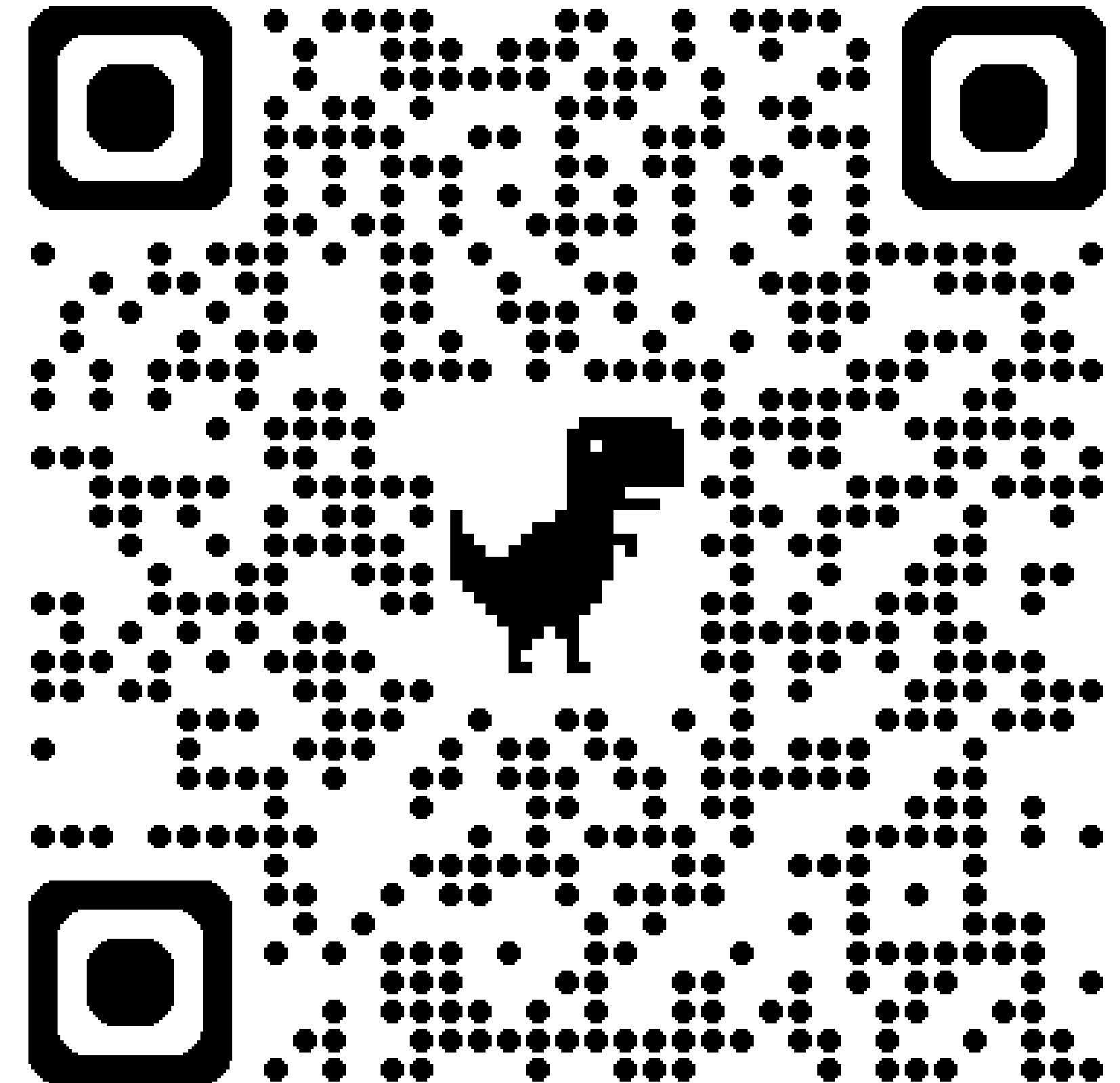
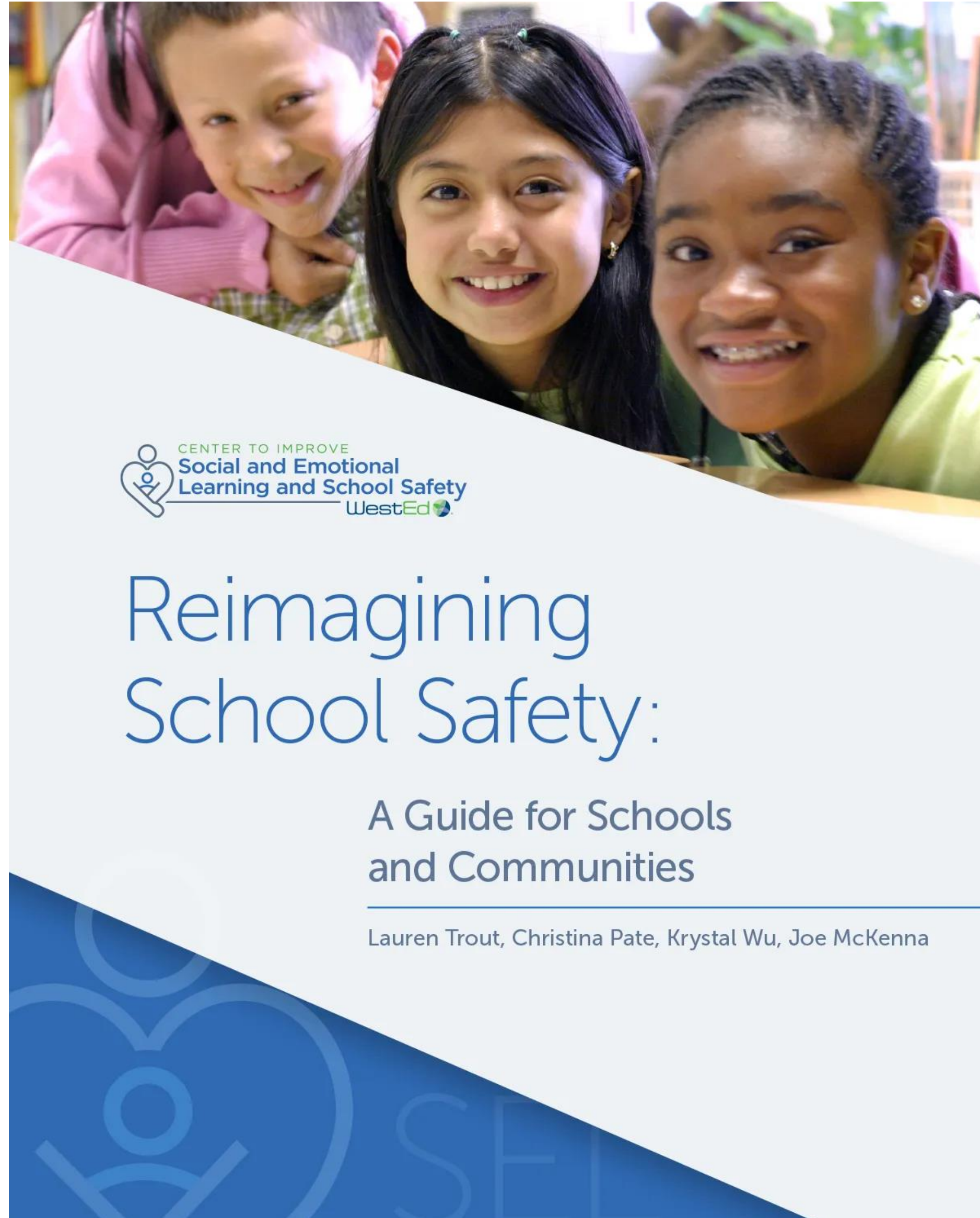
---

# Reflection

- What is something you are taking with you?
- What is something you are still wondering about?









---

# Thank you!

For more information, please contact:

Krystal Wu

[kwu@wested.org](mailto:kwu@wested.org)

Lauren Trout

[ltrout@wested.org](mailto:ltrout@wested.org)



*Survey Feedback*